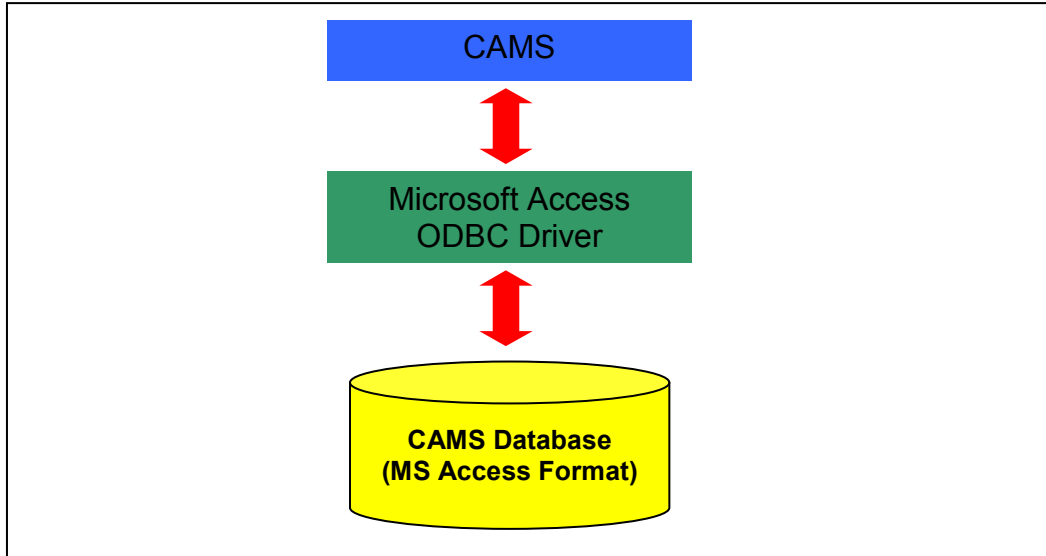
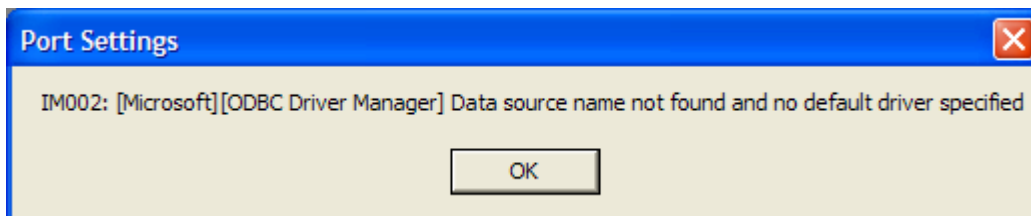


How to setup ODBC Driver for CAMS

As **CAMS** is using Microsoft Access Database Engine to store/retrieve its data. Microsoft Access ODBC Driver is needed for such purpose:

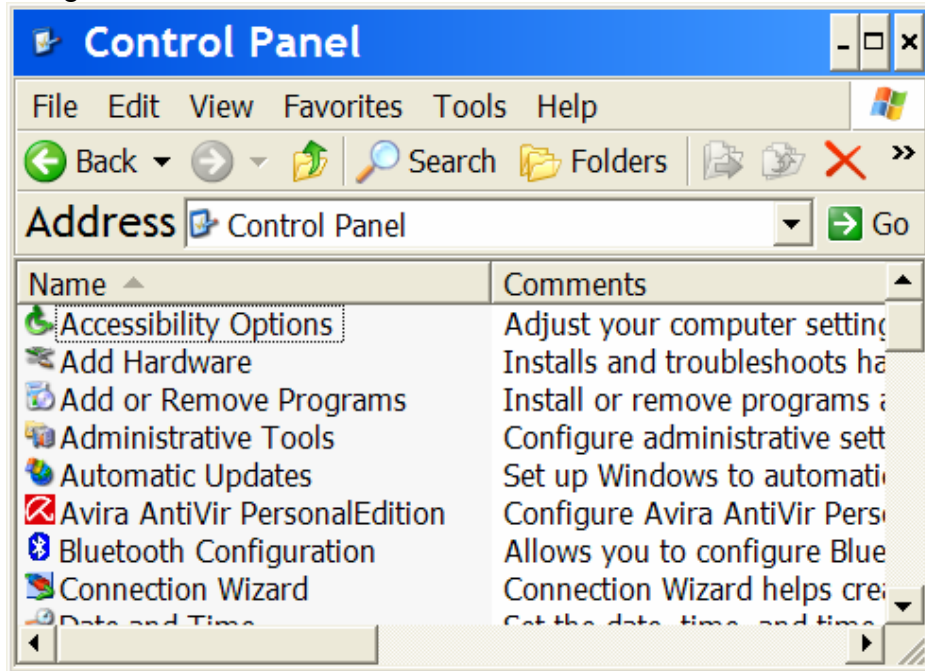


Depends on your Windows setup, sometimes the Microsoft Access ODBC Driver might be missing in your computer. Without Microsoft Access ODBC Driver, you will get the following error (or something similar) when running **CAMS**:

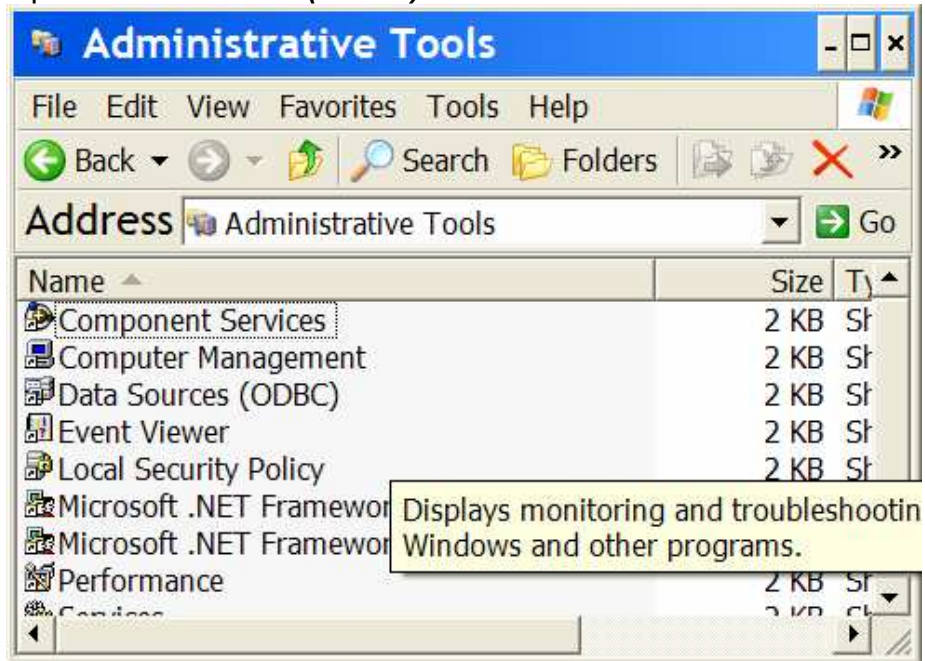


The steps below explain how you can install the Microsoft Access ODBC Driver:

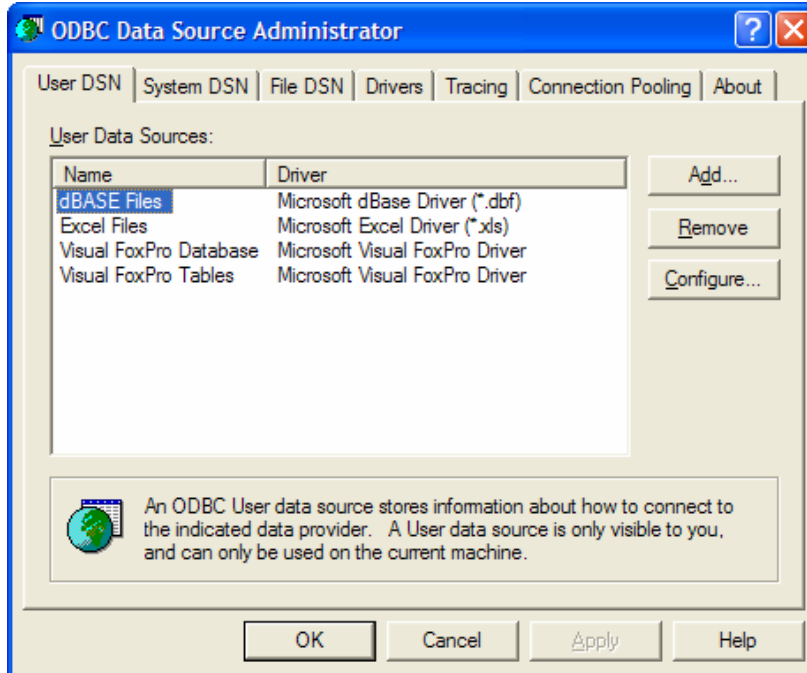
1. Bring out **Control Panel** Window and starts **Administrative Tools**



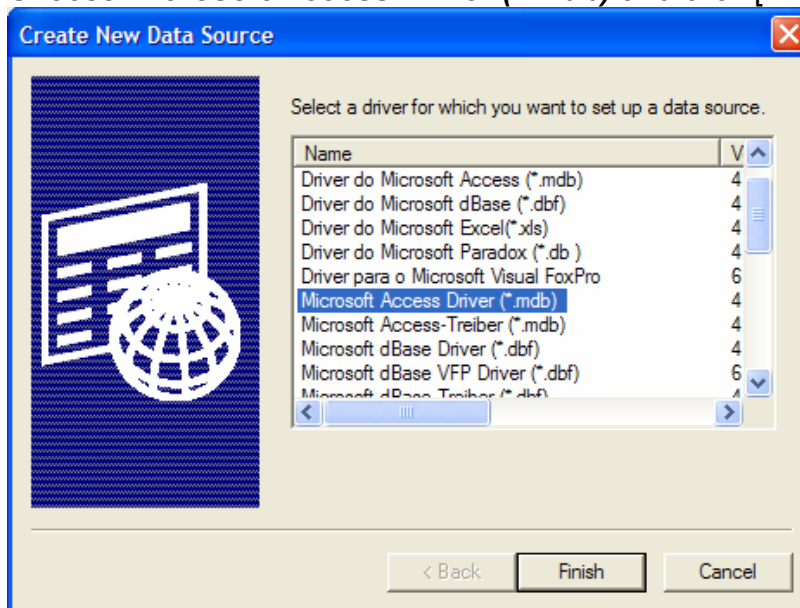
2. Open **Data Sources (ODBC)**



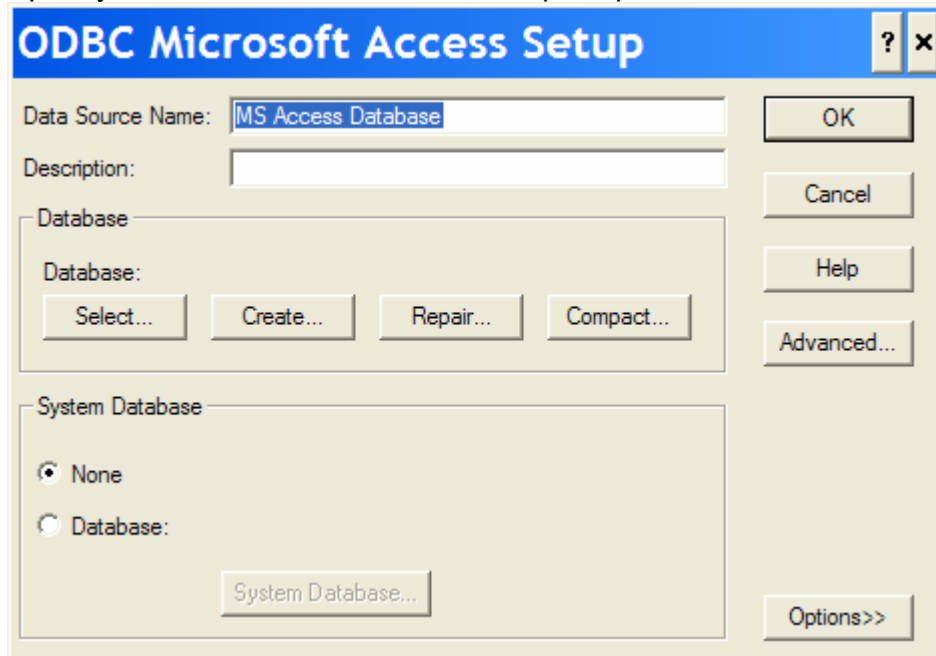
3. Goto **User DSN** tab



4. Choose **Microsoft Access Driver (*.mdb)** and click [Finish]



5. Specify "MS Access Database" when prompted for Data Source Name



6. This is what you should get after setting up the driver

